

STATE OF FLORIDA  
COUNTY OF PALM BEACH  
THIS PLAT HAS BEEN FILED FOR  
RECORD AT \_\_\_\_\_  
THIS \_\_\_\_\_ DAY OF \_\_\_\_\_, 201\_\_\_\_  
AND DULY RECORDED IN PLAT  
BOOK \_\_\_\_\_  
ON PAGE \_\_\_\_\_  
SHARON R. BOCK  
CLERK & COMPTROLLER  
PALM BEACH COUNTY  
BY: \_\_\_\_\_

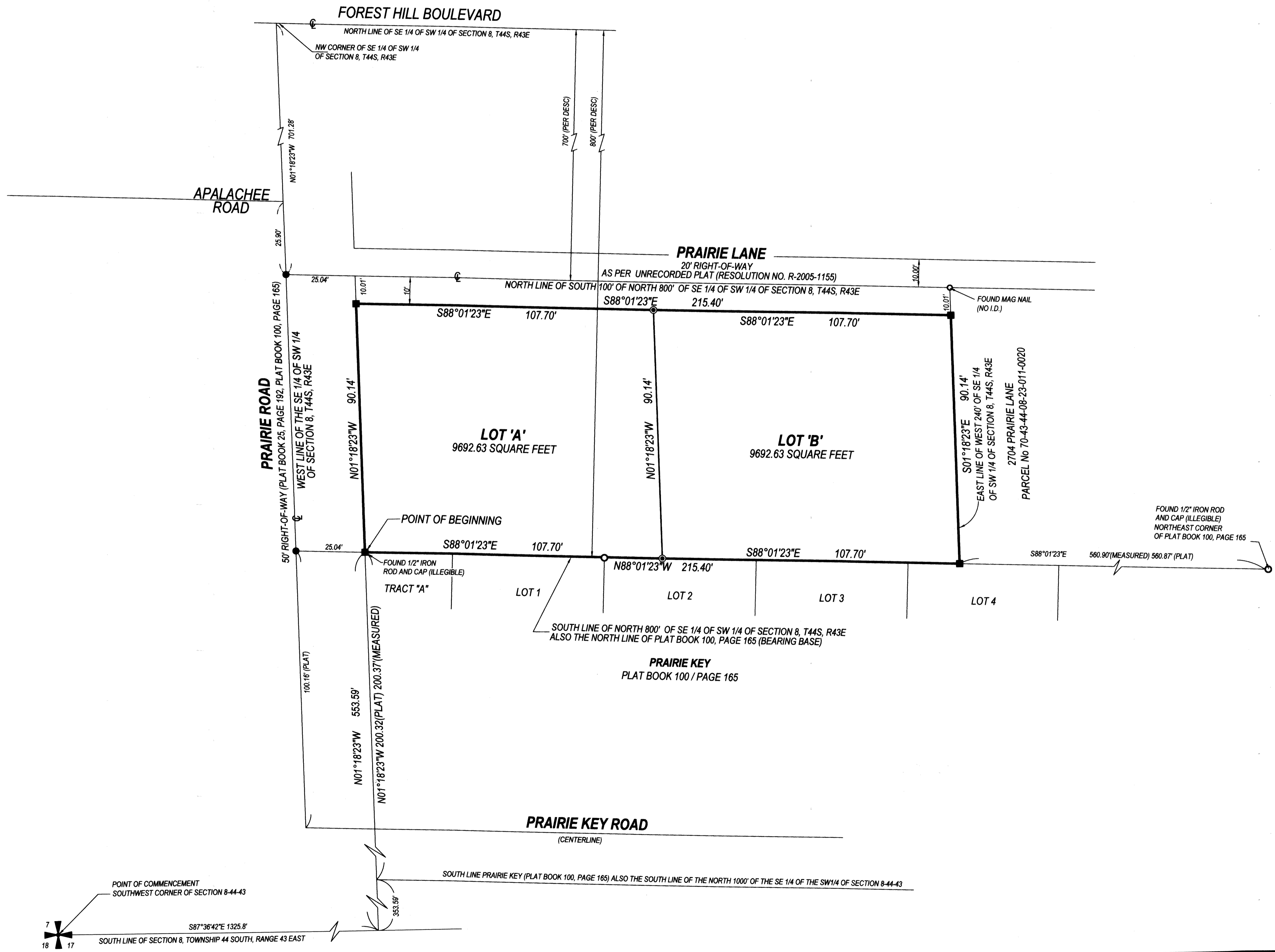
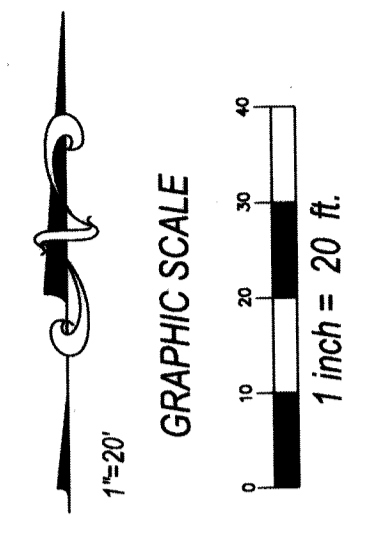
# PRAIRIE LANE

BEING A PORTION OF THE SOUTHEAST ONE QUARTER OF THE  
SOUTHWEST ONE QUARTER OF SECTION 8, TOWNSHIP 44 SOUTH, RANGE 43 EAST,  
PALM BEACH COUNTY, FLORIDA.

AUGUST 2016

LYING IN THE VILLAGE OF PALM SPRINGS, PALM BEACH COUNTY, FLORIDA  
(ZONING PROJECT NUMBER: 6001.04.12)

SHEET 2 OF 2



\* ABBREVIATIONS:  
PSM = FLORIDA LICENSED SURVEYOR & MAPPER  
LB = LICENSED BUSINESS  
PB = PLAT BOOK  
ORB = OFFICIAL RECORD BOOK  
PG = PAGE  
SQ. FT. = SQUARE FEET  
PRM = PERMANENT REFERENCE MONUMENT  
LS = LICENSED SURVEYOR  
ID = IDENTIFICATION

- LEGEND
- SET 4"x 4" CONCRETE MONUMENT AND BRASS DISK "LB 6788"
  - SET 1/2" IRON ROD AND CAP "LB 6788"
  - SET "MAG" NAIL AND DISK "LB 6788"
  - FOUND 4"x 4" CONCRETE MONUMENT (PERMANENT REFERENCE MONUMENT)
  - FOUND NAIL AND DISK/ FOUND IRON ROD

PM SURVEYING  
LB # 6788  
4546 CAMBRIDGE STREET  
WEST PALM BEACH, FL. 33415  
(561) 478-7764 FAX 478-1094  
VISIT US AT PMSURVEYING.NET  
JOB # 16050420

